

COVID-19 CLENT COMMUNITY SUPPORT

KEEPING CLENT COMMUNITY SPIRIT STRONG DURING COVID-19

THE LOCKDOWN LIFT-OFF!

10th July 2020

Lockdown Memory

Well done Michelle Hancock for 'Allotment Pride'. Obviously a very productive lockdown



My New Normal

Congratulations Kaye Senior for '5km Challenge'. Keep on running!



We're not going away

A group of wonderful people have worked so hard to bring Clent Community Support Group to life over the last 3 months and, although lock down has eased and many volunteers returned to work meaning some activities have slowed, the structure still remains. We are still here when needed so please contact us with any ideas or requests. In the meantime, let's all continue to be alert not only by maintaining safe distancing and regularly washing our hands but also by looking out for each other and ourselves

BE KIND
TO OTHERS,
BE KIND
TO YOURSELF

The Storecupboard wind-down

The Store cupboard team is proud to have been able to personally deliver more than 300 bags of supplies over the past 12 weeks. The initiative has been a huge success bringing great relief to many families in exceptional circumstances and although, the demand is becoming less with lockdown easing, and many of the people supported now able to go out and shop for themselves deliveries are still being made to a few. Remember; if your circumstances change at any time please let us know. We are more than happy to help

As lockdown measures change, roads get busier and more people head back to work, we are still here to help. As the needs of our community evolve, so will we.

Who to contact

Need support?

Phone or Text Kathryn on **07789 884 234** and we will do all we can to help.

Need something from our Storecupboard?

Phone or Text Michele on **07761 483 578** to arrange delivery

For pastoral needs contact Kim Topham on kimbotopham@outlook.com or **07952 162 373**

Monthly Community Quiz

By popular demand the monthly Clent Community quiz nights are now up and running on the second Wednesday of each month on zoom. The quizmaster is different each month and everyone is welcome to join. Please contact Bonnie on 07713 723 987 if you would like the zoom meeting details for the next quiz on Wednesday August 12th.



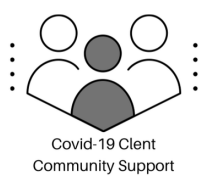
Community Litter Picking

Since the first Community Litter pick in June our volunteers continue to work hard to keep the village looking at it's best. All areas of the village have now been 'adopted' by volunteers including a large team who now work daily across the skatepark and football/play park area. Litter picking equipment and high vis jackets have been purchased and distributed to ensure the safety of everyone, and we have linked with the Parish Council to request more bins in the areas of high usage. We are encouraging people to take home their litter or use the bins provided via signage and by chatting with the users of the park area. We would like to say a huge THANKYOU to all volunteers and especially Carol Bates who has taken on the role of 'Community Litter Coordinator' - as without Carol none of this would have happened!



Thank you to our supporters:





COVID-19 CLENT COMMUNITY SUPPORT

KEEPING CLENT COMMUNITY SPIRIT STRONG DURING COVID-19

Thank you to the Newsletter Team

This is our 5th newsletter since the group was set-up and we are very thankful to the 'well oiled machine' of volunteers who have made this possible. They have been, Rosie P and Holly who are co-editors, Holly the creative who provides the design magic, Rosie the print shop, Jim the sorting office and then Rose H and her wonderful delivery team who make sure that all 450 copies are hand delivered to every resident in Clent.

Sunflower measurements

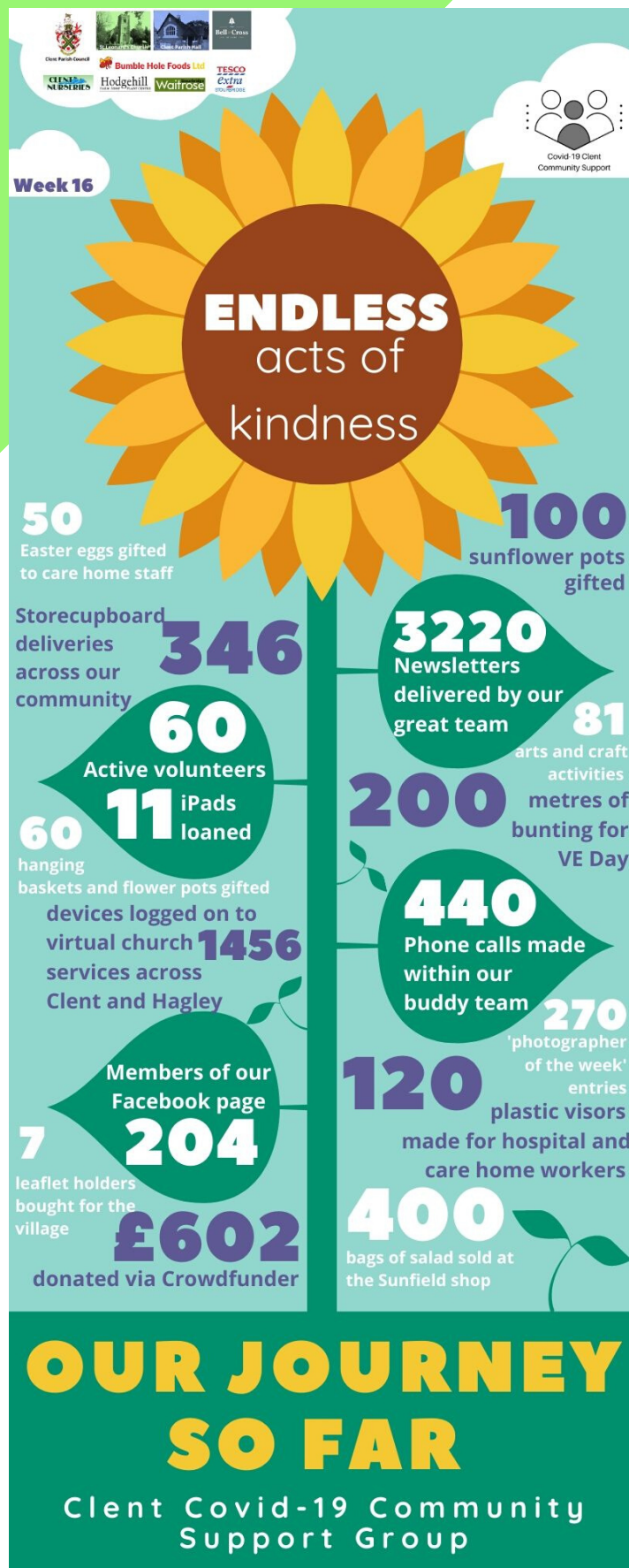
How are your sunflowers coming on?
We have some pretty impressive heights recorded so far so get measuring and posting on FB or WhatsApp to Rosie on 07931216656. The closing date for final measurements will be 15th August.



A message from Kim

Over the past few months we have been separated from each other and yet I have never felt closer to my community and what's going on in it. Our wonderful Covid support group have drawn on their experience, talent and resourcefulness to help and assist those who were in need. I have made friends with people I had never met before and a deeper sense of community has developed around the village. My hope is that, with our slow return to our new normal, we continue to support each other, look out for each other and enjoy all that life has to offer. Stay well, stay safe, stay true.

Kim Topham - Your new Curate, St Leonard's



Thank you to our supporters:



WARNING!

DO NOT leave your hand sanitiser in the car in hot weather. The alcohol releases flammable vapours when heated that can reach flashpoint and ignite.